

ONLINE BANKING ENROLLMENT

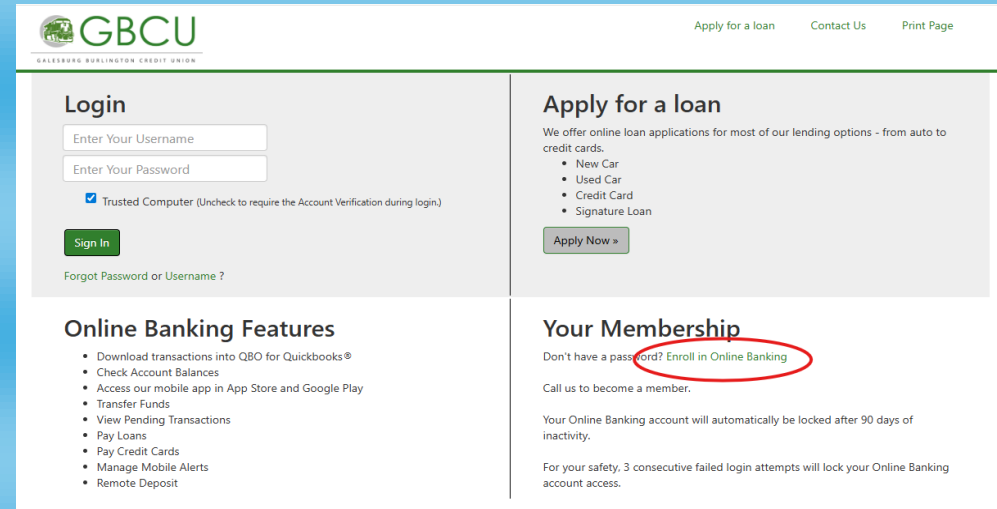
1.

VISIT WWW.GBCU.NET & CLICK ACCOUNT LOGIN



2.

RE-ENROLL IN ONLINE BANKING



3.

ENTER YOUR MEMBER INFORMATION

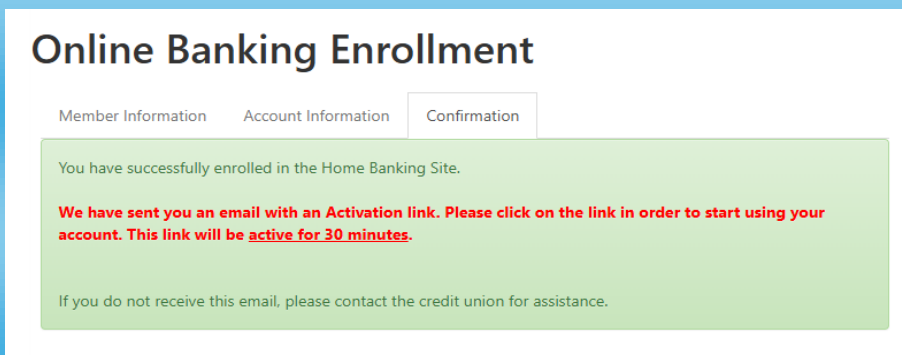
The screenshot shows the 'Online Banking Enrollment' form, Step 1: Member Information. The form has three tabs: 'Member Information', 'Account Information', and 'Confirmation'. The 'Member Information' tab is active. It contains fields for 'Social Security Number' (with a red arrow pointing to the input field) and 'Email' (with a red arrow pointing to the input field). A 'Next' button is at the bottom right. A 'Required Information' box on the right states: 'To enroll online, you will need your Member Number, Social Security Number, Date of Birth and the Email address we have on file.' A 'Need Help?' box below it says: 'Please call 309-342-1775 if you require further assistance.'

4.

The screenshot shows the 'Online Banking Enrollment' form, Step 2: Account Information. The form has three tabs: 'Member Information', 'Account Information', and 'Confirmation'. The 'Account Information' tab is active. It contains fields for 'Member Number' (with a red arrow pointing to the input field), 'Date of Birth' (with a red arrow pointing to the input field), 'Select a Username' (with a red arrow pointing to the input field), 'Enter a Password' (with a red arrow pointing to the input field), and 'Re-type Password' (with a red arrow pointing to the input field). A checkbox for 'I have Read and Agreed to the Terms and Conditions' is at the bottom left. A 'Next' button is at the bottom right.

5.

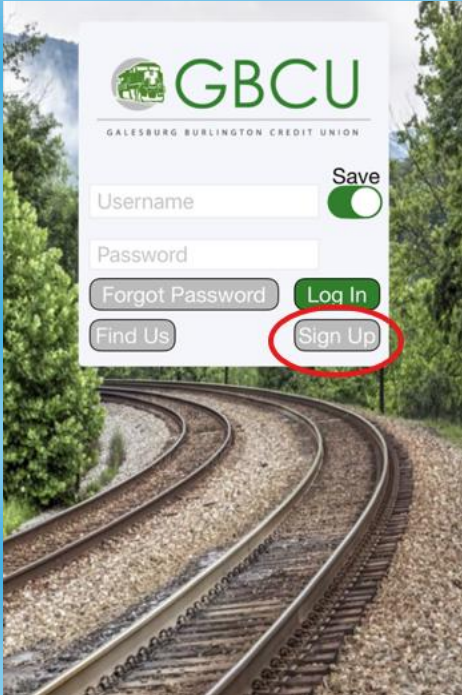
CONFIRM! CHECK YOUR EMAIL



MOBILE BANKING ENROLLMENT

1.

CLICK SIGN UP



2.

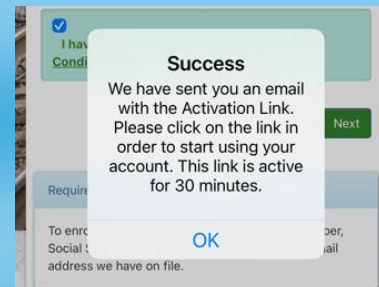
ENTER YOUR MEMBER INFORMATION

A screenshot of the 'Online Enrollment' page. The page has a green header with a 'Back' button and the title 'Online Enrollment'. Below the header is a section titled 'Online Banking Enrollment' with an 'Enrollment Steps' dropdown. The main section is 'Member Information', which includes a paragraph of instructions. Below this are input fields for 'Social Security Number' (with a red arrow pointing to it) and 'Email' (with a red arrow pointing to it). A red arrow also points to the 'Next' button. At the bottom, there is a 'Required Information' section with a note about the information needed for enrollment.

3.

A screenshot of the 'Online Banking Enrollment' page. The page has a green header with the title 'Online Banking Enrollment' and an 'Enrollment Steps' dropdown. Below the header are several input fields: 'Member Number' (with a note 'Up to 6 digits, No dashes, No spaces'), 'Date of Birth' (with a note 'mm/dd/yyyy'), 'Select a Username' (with a note 'Between 8 and 30 characters, Case Sensitive'), 'Enter a Password' (with a note 'Between 8 and 30 characters, Case Sensitive, Can only contain letters, numbers and the special characters: '@', '.', '-', and '_''), and 'Re-type Password'. At the bottom, there is a green box with a checkbox and the text 'I have Read and Agreed to the Terms and Conditions'. A 'Next' button is located at the bottom right.

4.



GBCU MOBILE APP

